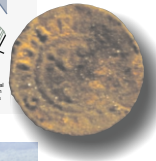
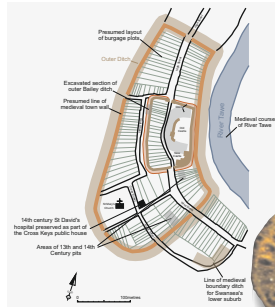


THE GLAMORGAN-GWENT ARCHAEOLOGICAL TRUST



HALF-YEARLY REVIEW 2010 & ANNUAL REVIEW OF PROJECTS 2009-2010



The Glamorgan-Gwent Archaeological Trust Ltd
Heathfield House Heathfield Swansea SA1 6EL



Cover images from top: The 'wandering wall' on Cefn Car. Part of a stone inscription, probably a tombstone, referring to an 'unjust fate'. It was found in the debris of the tower building shown below it. Aerial close-up of the herring-bone stone foundations of the tower building discovered during the building of a new coach park near Celtic Manor. Plan showing the 'old' and 'new' Swansea Castle and the probable medieval town layout. The reverse (tail side) of an extremely rare Henry 1 silver penny, struck in Pembroke probably between 1115 and 1120. This is the earliest coin yet found in Swansea. A 19th century worker's house in a small settlement of at least five houses and a barn at Ffos-y-fran near Merthyr Tydfil. The settlement is thought to date back to the mid-18th century when the Dowlais Ironworks was established. Volunteers excavating one of the three trenches outside the front gate of Oystermouth Castle. Photographs, plan and design copyright © The Glamorgan-Gwent Archaeological Trust Ltd. All images are from GGAT publication 'Discovery and Learning 2010' June 2010.

CONTENTS

CONTENTS.....	1
REVIEW OF CADW PROJECTS APRIL 2009 — MARCH 2010	2
GGAT 1 Heritage Management.....	2
GGAT 43 Regional Archaeological Planning Services and GGAT 92 Local Development Plan Support.....	8
GGAT 67 Tir Gofal.....	9
GGAT 80 SE Wales Industrial Ironworks landscapes (Year Six).....	10
GGAT 89 Prehistoric and Roman Settlements and other sites.....	12
GGAT 96 Oystermouth Castle.....	12
GGAT 97 Glastir Polygon Digitisation	14
GGAT 98 Historic Environment Monitoring Project	15
GGAT 99 Pontypool Urban Survey	15
REVIEW OF CADW PROJECTS APRIL 2010 — SEPTEMBER 2010	17
GGAT 80 SE Wales Industrial Ironworks Landscapes (Year Seven)	17
GGAT 96 Oystermouth Castle.....	18
GGAT 101 Swansea Bay Trackways	20
GGAT 102 Southeast Wales Later Medieval and Early Post-medieval Monuments (c AD1100-AD1750)	20
GGAT 103 Morgannwg-Gwent Arfodir (Coastal Archaeology and Engagement) .	22
GGAT 104 Vale of Glamorgan Fieldwalking.....	22
FUTURE PROGRAMME OCTOBER 2010 — MARCH 2011	23
GGAT 1 Regional Heritage Management Services.....	23
GGAT 100 Regional Outreach Service	23
GGAT 101 Swansea Bay Trackways	23
GGAT 103 Morgannwg-Gwent Arfodir (Coastal Archaeology and Engagement) .	23
GGAT 104 Vale of Glamorgan Fieldwalking.....	23
Proposed Contingency Projects.....	24
GGAT 96 Oystermouthcastle (Post-excavation)	24
GGAT XX Southeast Wales LMEPM (c AD1100-AD1750) Medieval/Early Post-Medieval Ecclesiastic Sculpture.....	24
CADW-FUNDED SCIENTIFIC CONTRACTS.....	25
POST-EXCAVATION AND PUBLICATION REVIEW	25
APPENDIX 1 — REVIEW OF DELIVERY OF WAG OBJECTIVES	26
APPENDIX 2 — PLANNING STATISTICS 2010—2011	31

REVIEW OF CADW PROJECTS APRIL 2009 — MARCH 2010

GGAT 1 Heritage Management

The following section relates to Cadw's requirement and work specification for the provision of wide-ranging heritage management services in Southeast Wales. The financial year 2009-10 is the last year in which outreach activities took place as part of GGAT 1. From April 2010 they are to be undertaken as a separate project.

Information in response to requests from Cadw including data to support projects particularly the Scheduling Enhancement Programme

Through the detailed information contained in the regional Historic Environment Record, the Trust assisted Cadw in many areas of its own statutory functions including the scheduling enhancement programme.

HER Information to enquirers in accordance with the Trust's 'Guidelines for Access and Charging' (except paragraph 11)

The Heritage Management Section of the Trust provided individuals and communities in the region with archaeological information and advice in pursuit of their projects and interests. During the year 188 enquiries were made as compared with 241 for the previous year. This represents a considerable drop in overall consultations. However, whilst there was a reduction in the number of commercial consultations, perhaps unsurprising in the current development climate, there was a significant increase in the number of public consultations, for which support is provided by Cadw. There were 35 visits to the Trust's offices to consult the detailed further information files of the HER.

Year	*Total consultations	Commercial	Public	Total visits to Trust
2004-2005	262	96	166	67
2005-2006	349	103	246	74
2006-2007	273	97	176	38
2007-2008	266	110	156	68
2008-2009	241	144	97	46
2009-2010	188	64	124	35

*These exclude consultations for the Countryside Council for Wales, the Forestry Industry and Public Utilities, etc, which are reported elsewhere.

Advice on Scheduled Monument Consent Applications

On behalf of Cadw, the Curatorial Division, as a recognised consultee, received 23 consultations, of which only four required responses: the remainder were notifications of Welsh Assembly Government's decisions on applications. As the holder of the Historic Environment Record, the Trust is able to offer further detailed information and advice particularly when a planning application has also been lodged.

Site visits/meetings by curatorial staff

During the year, the Trust was asked by organisations and private individuals to visit sites either to provide information about the nature of the site, or to advise on management issues.

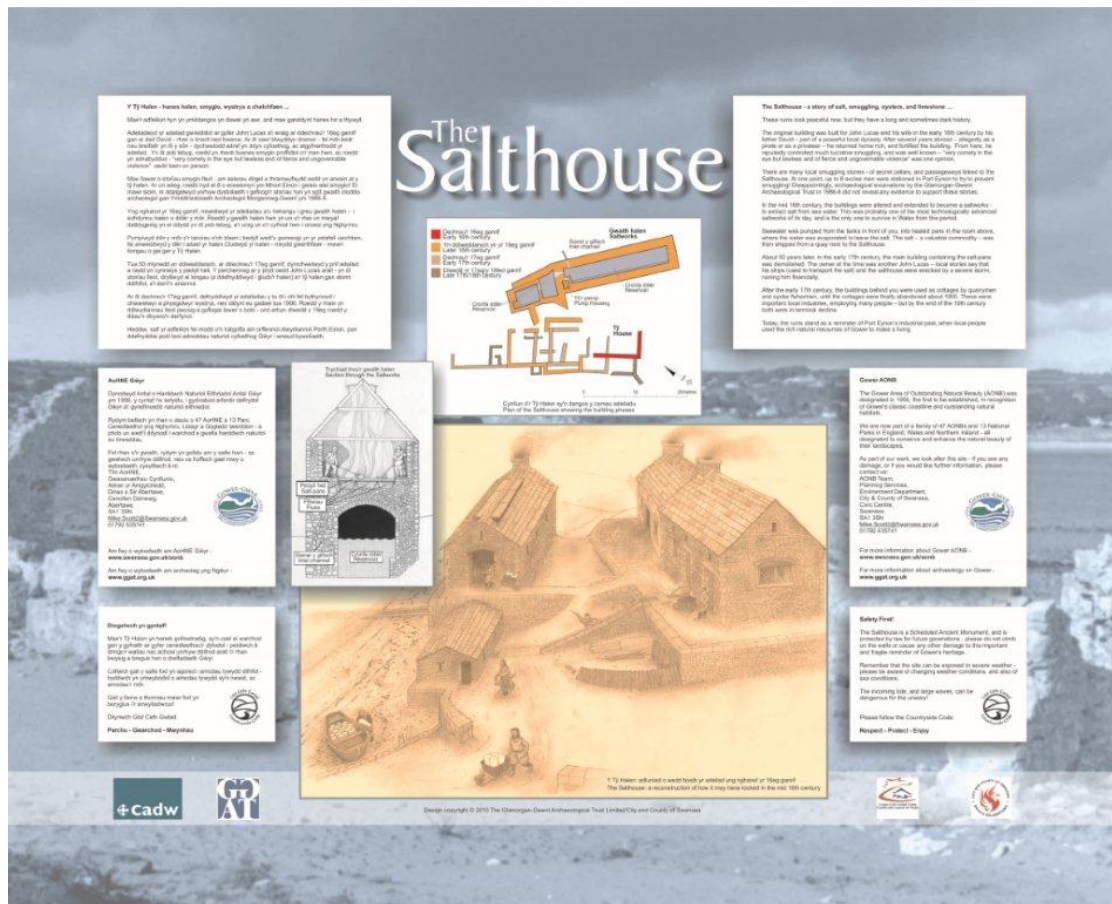
Staff visited several sites including Porthkerry Country Park to advise on general management issues concerning the historic environment, Rhossili to advise on erosion of deposits, Oystermouth to examine a trackway eroding out of the foreshore, and Mumbles Head to advise on the WWII coastal battery.

Information and assistance associated with the Register of Landscapes of Historic Interest in Wales

Liaison and follow-up advice continued to be provided when required to the Countryside Council for Wales and others with respect to the Register of Historic Landscapes and its application in land-use planning and historic environment management.

Advice to Local Authorities and National Parks on a range of matters including local and structure plan policies

Local Authority bodies made a total of nine HER queries this year. During the course of the year, the Trust provided information on Roman military works to Caerphilly County Borough Council, on the Taff and Rhymney river valley corridors to Cardiff City Council, and on subjects as diverse as the bone caves of Gower and WWII monuments to Swansea. Information and photographs were also provided to Caerphilly CBC for a new exhibition at the Winding House Museum, Elliotstown. A new interpretation board was prepared for the Salthouse at Port Eynon, for the City and County of Swansea. Trust staff also attended meetings in regard to the revised version of the Swansea Environment Strategy Action Plan for 2008-10, for which we also provided written comments. The Trust also worked with the City and County of Swansea and Monmouthshire County Council on the preparation of HLF landscape bids.



P11 Permanent display panel of the Salthouse Port Eynon prepared by Trust staff working in conjunction with City and County of Swansea

Advice to local authorities and National Parks on development proposals as part of the development control process.

For information see report on Archaeological Planning Management Services (GGAT 43 & GGAT 92) below.

Advice and, where appropriate, visits associated with Woodland Grant Schemes work and other Forestry Authority consultations

With the introduction of the Better Woodlands for Wales scheme, the nature of the Trust's provision of information to the Forestry Commission has changed, since most of the other schemes are being phased out. Under the Historic Environment Services Project remit, the Trust screened a total of 85 applications. From these 23 WHE1s were produced. No applications were received for FLA or Forest Plans.

Advice as part of the Tir Gofal agri-environment scheme as outlined in the CCW document "Tir Gofal Historic Environment Liaison Procedures for Historic Features and Archaeological Sites"

See report on GGAT 67 below.

Provision of information and advice to farmers and other landowners outside the Tir Gofal scheme

Approaches for information and advice have been received from a few farmers and landowners. These have been accounted as part of the HER enquiry procedures.

Initial enquiries from service industries, such as water and electricity and other utilities

For information see report on Archaeological Planning Management Services (GGAT 43 & GGAT 92) below.

Liaison and advice to conservation bodies such as the Countryside Council for Wales, the National Trust, etc

The Trust continued to maintain good contact with the Countryside Council for Wales over a wide variety of issues and projects. The Trust also maintained close relations with other organisations and individuals that have responsibility and interests in national and local historic environment issues. Trust staff had a number of meetings with officials of the Brecon Beacons National Park, to discuss the park's Management Plan and the possible appointment of a BBNP archaeologist.

Monitoring the effectiveness of Planning Guidance (Wales) and Circular 60/96 – Planning and the Historic Environment: Archaeology

Both documents are fully and effectively enshrined in planning policy and practice in Southeast Wales. All the regional Unitary Authorities took full regard to the provisions required by central government to protect archaeological interests through the planning processes. No specific actions were required in the reporting period.

Follow-up advice and long-term support for pan-Wales (churches, coastal, etc) and other Trust projects

The Trust's Heritage and Outreach Manager provides historic environment information for the Diocesan Advisory Committee for the diocese of Swansea and Brecon as an offshoot of the Historic Churches project, attending six general meetings a year, and undertaking site visits as requested by the archdeacon. Acting in this role and also as a member of the National Committee for Recording and Protection of Early Medieval Inscribed stones and Stone Sculpture, she has continued to work with Llangyfelach church on the conservation and redisplay of the Early-medieval carved stones there, which resulted during the year in the relocation of two of the stones, the conservation of all three, and the provision of an information panel. She also acts as secretary to the Caerleon Research Committee, attending two meetings a year and acting as first port of call to general enquiries by phone and email about Caerleon.

The wider dissemination of the results of Cadw-funded projects including through the website.

Cadw, in partnership with the Welsh Archaeological Trusts, promotes the need across Wales for disseminating information on archaeological work. Public demand for information on the archaeological heritage has rapidly grown over the past few years and the Trust continued to utilise its website (www.ggat.org.uk) as a first call for information provision.

The launch of the redesigned website in the summer has allowed the mounting of reports of some of our Cadw-funded projects in addition to summary information.

Responding to consultations from the Welsh Assembly Government and other organisations on proposals which affect the historic environment.

As part of our regional heritage remit the Trust is consulted on a wide variety of matters. During the year we responded to the following documents.

To	Document title
Cadw	Historic Environment Records Draft Guidance for Local Authorities
Department for Environment, Sustainability and Housing	Planning for sustainable communities TAN 2009
Marine licensing team	Marine licensing in connection with Marine and Coastal Access Bill
National Assembly for Wales	Cultural Duty Order
Welsh Assembly Government	Glastir targeted elements

Dealing with consultations connected with the Countryside Rights of Way Act

No consultations took place under this heading during the year.

Dealing with consultations connected with the Uncultivated Land and Semi-natural Areas Provisions of the Environmental Impact Assessment Directive.

Three consultations took place under this head during the year.

Curatorial advice in connection with the marine environment

The Trust continued to attend the Severn Estuary Partnership (SEP) Joint Advisory Committee (JAC) meetings held by that organisation.

During the year the Trust provided information and support in connection with the production of two Shoreline Management Plans that affected the South Wales coast. Baseline data was provided to the consultants undertaking the work and this was supplemented with face-to-face meetings, attendance at stakeholder presentations, and formal representation as to how Historic Environment matters should be properly addressed and presented in the complex project outputs.

The Trust is a member of the Severn Tidal Power stakeholder group. The Trust provided baseline and other data to the sub-consultants undertaking the Strategic Environmental Assessment and this was supplemented with subject discussion meetings. The Trust attended three subject specific (Historic Environment) technical workshops at which the consultant's and sub-consultant's approach, on-going results and future strategy was presented and discussed. The Trust also attended three general Severn Tidal Power presentations.

General outreach/education

As part of our outreach commitment, and in partnership with Cadw, the Trust continued to prepare displays and leaflets, made new contacts, gave lectures and received students and school placements into our offices.

The Trust provided information to the BBC on Culver Hole in Gower for a forthcoming coastal programme.

Trust staff gave fifteen talks and lectures during the course of the year (excluding the talks given to town planners for professional development purposes, for which see the Archaeological Planning Management Services Report GGAT 43 & GGAT 92 below). Recipients included the Footprints of Industry Conference, Atlantic College Archaeology Group, Bridgend Historical Society, Bridgend Probus Club, Caerphilly Local History Society, the Kenfig Society, Manselton Mothers' Union, the Royal Institution of South Wales, the Simeon Society of Dunvant, University of the Third Age, Wider Horizons, and

subjects included the HER, archaeology in Swansea, excavations on the barrow cemetery at Monkash, the Romans in South East Wales, historic churches, South Wales ironworks and their historic landscapes, and the copper and coal industries in Swansea.

Our partnership with heritage groups and organisations in our area continued to bear fruit. The Trust provided exhibitions for 20 venues in total, half of which were at events and half unattended. Trust staff attended a diverse range of activities including St Illtyd's Day at Llanhilleth, two events organised by the Glamorgan Family History Society at Cardiff and Swansea, an Open Day at Llancaiach Fawr, the Local History Book Fair at Swansea Museum and the Chepstow Show.

The Historic Churches display has continued to be extremely popular: the panels on Monmouth have been on tour round the diocese since they were first made, and were at Skenfrith and Grosmont churches over the summer to help publicise the Open Churches event. The Llandaff churches board performed the same function at Margam Abbey, and the Gower boards at Llangennith. For all three dioceses, a series of leaflets was produced giving details of churches to visit (a pdf version of the Churches to visit leaflets can be downloaded at http://www.ggat.org.uk/news/archive/news_archive_2009.html).

Once again the Trust in association with Swansea Museum, organised an Open Day at the museum as part of the Council for British Archaeology's Festival of British Archaeology. This proved very successful, with approximately a thousand visitors recorded over the day. The Trust provided various exhibitions, HER searches, prehistoric pottery making, cave painting, a mock excavation for children, a Roman cookery demonstration and a finds roadshow. A Facial Reconstruction in Archaeology workshop was led by sculptor Susanna Ciccotti, and talks on subjects of local interest were given throughout the day. A wide range of local history and heritage societies and other organisations also contributed by attending the event, including Swansea Metal Detecting Club, Aberavon Historical Friends, Gower AONB, West Glamorgan Family History Group, Friends of Newport Ship, Swansea Bay 1940's and Homeguard, and the West Glamorgan Archive Service. Meibion y Ddraig, a living history group, again provided an insight into the lives of 14th century archers and their families.



Pls 2 & 3 Activities at Festival of British Archaeology GGAT Open Day Swansea Museum 2009

Also as part of the Festival of British Archaeology Trust staff gave walks in Monmouth, Caerleon, the Lower Swansea Valley and Mumbles Head. The Mumbles Head walk was also given as part of the Gower Walking Festival, which also included walks on the Archaeology of Llanmadoc and the industry of the Clyne Valley, and a sketching party was held at Port Eynon. The Trust has also established itself as a provider of walks in Margam Park for the monthly programme provided by the Friends of Margam Park.

The Trust has maintained attendance at the Gower Countryside Forum, which is an advisory body for the management of the Area of Outstanding Natural Beauty. As a result we have raised the profile of the historic environment, which should result in a better understanding of historic environment issues and positive management benefits. The Trust also sits on the technical support group for the Wye Valley AONB's HLF-funded 'Overlooking the Wye' project.

The Trust continues to offer support, advice and information to a number of community groups in connection with heritage projects. They include the Friends of Llandeilo Talybont Old Churchyard and the Mumbles Development Trust.

In September 2009 the Trust started posting some of its 'grey literature' reports on scribd (<http://www.scribd.com/Glamorgan-Gwent%20Archaeological%20Trust>) including three arising from works funded through grant-aid supplied through Cadw. These are: Early Medieval Ecclesiastical Sites (posted 14 September 2009, 1,566 reads at September 2010); Roman Roads in Southeast Wales (posted 14 September 2009, 1,718 reads at September 2010); Merthyr Tydfil Brewery (posted 18 September 2009, 1,172 reads at September 2010).

Regional Heritage Forum

This year's meeting was held in Merthyr Tydfil and hosted by Miller Agent at the education centre at Ffos-y-fran. The meeting was well attended. In addition to review of the work carried out by the Trust for the local authorities two presentations were given: on the archaeology and outreach activities undertaken as part of the Ffos-y-fran opencast and land reclamation scheme; and on the new management system for the Historic Environment Record.

Community Archaeologist post

The Trust successfully carried out a small HLF-funded community project involving work at Penrhiwceibwr (Rhondda Cynon Taff) and New Tredegar (Caerphilly) based around audits of the local historic environment assets (see <http://ggathlf.wordpress.com/> for activity and encapsulated product), which had been developed in the previous year through the Cadw-funded Regional Heritage Management Service. We have not yet been a position to develop plans for a full-time Community Archaeologist post, but the work done for this project puts us in an excellent position to take this forward when opportunity permits.



Pls 4 & 5 HLF Community Archaeology: Researching and planning the New Tredegar Trail

GGAT 43 Regional Archaeological Planning Services and GGAT 92 Local Development Plan Support

Planning Statistics 2009—2010 (see Appendix 2)

The archaeological planning services provided on behalf of Cadw require the Trust to initially assess all the region's planning applications and to notify the planning authorities of archaeological constraints to proposals, giving information and specific recommendations on the best course of action required to protect archaeological interests whilst enabling permitted development. Thereafter, and with the combined resources provided by all twelve regional authorities, the Archaeological Planning Management Section (APMS) provided further detailed services, such as the provision of archaeological briefs for pre-determination assessments, approving detailed specifications submitted by developers, and monitoring the work from inception and fieldwork to the production of the final report.

The 2009—2010 detailed statistics of the responses to planning applications made by the APMS, which vary from recommending desk-based assessments and intrusive field evaluations in the predetermination period of planning applications through to the attachment of appropriate archaeological conditions on planning consents, are attached as an appendix (2) to this review.

The significant decrease in the number of applications registered by the Local Planning Authorities (LPAs) in Southeast Wales reported last year continued with a further decrease (circa 20%) over the period due to the economic downturn with the number falling 16,898 in 2008-2009 to 13,592 in 2009-2010.

This resulted in a decrease in the number of applications where the section provided detailed advice (1530 in 2008—2009 to 1330 in 2009-2010) of 13% from the preceding year. Our detailed responses to the planning applications included 9 objections to applications on the grounds that the proposed development would have an unacceptable impact on the archaeological resource (4 the previous year); recommendations that in 47 cases additional information on the impact of the proposed development on the archaeological resource would need to be provided by the applicant prior to the determination of the planning application (68 the previous year) and in 389 cases recommendations that conditions requiring archaeological work to be undertaken should be attached to the planning consent (444 the previous year). These conditions can be divided into three types, those requiring programmes of archaeological investigation (such as excavations, intensive watching briefs) of which there were 155 (137); those requiring an archaeological watching brief to be conducted during the development 171 (193); and those requiring buildings and structures to be recorded 63 (114). The section has also been involved in thirteen planning appeals providing information and written advice to the Planning Inspectorate of the Welsh Assembly Government.

Presenting Continuous Professional Development to Local Planning Authorities

The decrease in casework allowed an opportunity to strengthen relationships with the LPAs through carrying out CPDT seminars on archaeology and planning at each of the 13 LPAs, these were attended by more than 350 planning officers and other departmental staff. The investment of time in this initiative is already reaping benefits with improved communications between individual LPA officers and APMS staff in advance of pre-application meetings with developers.

Major development impacts

Although the number of planning applications has reduced this year a number of large-scale and complex development projects continued to be initiated in Southeast Wales. The service has committed considerable time and effort in ensuring that the historic environment is carefully considered during the planning process and that mitigation measures including preservation in situ and excavation are included in these developments. This year these developments have included in particular excavations at Portskewett in Monmouthshire where a medieval stone structure was investigated; at the Celtic Manor Golf Course near Caerleon where a Roman stone structure (possibly the base of a tower tomb) was excavated, and at Caldicot in Monmouthshire where during the excavation of a Roman field system associated with an farmstead a deep pit containing

domestic Beaker pottery was found. The Section also monitored the extensive evaluation work required prior to the submission of a planning application for the new military academy proposed for the site of MOD St. Athan. This investigation located Bronze Age burial sites; Roman farmsteads and associated fields; and medieval occupation sites allowing a programme of archaeological investigation to be developed for implementation during the construction work.



PI 6 Possible foundations of a Roman tower tomb excavated by the Trust for the Celtic Manor Resort as part of the development associated with the hosting of the Ryder Cup in 2010

Utilities

The Trust has continued to provide advice to the utility companies and the Environment Agency on the impact of their works on the archaeological resource. 101 consultations were received during the year (an increase of 34 on the preceding year) mainly as a result of West and Wales Utilities starting to consult us on gas pipeline works. Following our advice, archaeological monitoring of these linear developments led to a number of historic environment interests being recorded.

Local Development Plans

We have noted in the last three reports the introduction of a new form of strategic planning in Wales, Local Development Plans (LDPs), which will succeed the Unitary Development Plans (UDP) system. The Trust has provided substantial input in the development of these new plans, attending meetings to discuss proposals and providing advice on the impact of development on the archaeological resource in regard to land proposed for allocation in the plans. This has required advice to be given on c200-300 proposed land allocations for each plan. Local Development Plans are also subject to Sustainability Appraisal (SA) and Strategic Environmental Assessment (SEA). The section has responded on historic environment issues in such respects.

GGAT 67 Tir Gofal

Forty-seven reviews were undertaken, of which four included additional lands. There was one HE2.

The Trust continued to meet with Cadw, Tir Gofal management and regional representatives as requested to monitor the progress of the scheme.

GGAT 80 SE Wales Industrial Ironworks landscapes (Year Six)

During Year Six of the project, the second year of targeted work was carried out on those areas (ie drainage and extractive areas) selected during years three and four of the project, which identified three zones of greatest potential:

- a) The Aberdare-Hirwaun corridor and the area to the north of Hirwaun centred on the upper reaches of the Afon Cynon to Penderyn
- b) An area immediately to the west of Abersychan taking in the Abersychan and Varteg Ironworks and the adjacent hill slopes and valleys
- c) The upper Sirhowy, Ebbw Fach and Ebbw valleys and the watershed to the north of the Sirhowy Valley around Trefil, this would take in a series of closely spaced Ironworks from Nantyglo to Sirhowy and their connected landscapes.



PI 7 Interior of quarry NPRN 262598 at Blaennant (Ffynnon Lassa), view to the southwest

Year Six works initially concentrated on zone a), and during the second half of the 2009—2010 financial year zone b) was examined with contingency funding. As in the previous year the work entailed a more detailed level study centred on limited areas including the gathering of available historic background data, more detailed map regression, and detailed mapping of features from historic mapping, and aerial photographs, as well as targeted survey fieldwork, and the production of management recommendations and specific scheduling proposals.

Fine-grained map regression of the defined areas based on the first edition 25-inch OS map (LANDMARK Historic Mapping), and all other available mapping (i.e. estate and Tithe maps), in conjunction with consultation of selective detailed aerial photographic material, formed an important element to the project. Targeted field visits were also carried out. The project includes interrogation of records held by the Historic Environment Record (HER), and National Monument Record (NMR), as well as data held by Cadw (for Scheduled Ancient Monuments and Listed Buildings), and the Countryside Council for Wales (for Environmental data), supplemented by other readily available primary (e.g. records and maps at the National Library of Wales, Aberystwyth, the Glamorgan Record Office, Cardiff, and elsewhere). More general works and articles and other sources were also consulted.

It was not intended to carry out original research, though where this would have a relevant and beneficial approach at some future date this has been identified.

Essential Task Breakdown (Year 6)

1. Compile baseline documentation
2. Undertake historical mapping and production of revised detailed area constraint maps
3. Review the assembled data
4. Undertake field survey
5. Prepare field survey database & review area/site details
6. Compile and disseminate reports

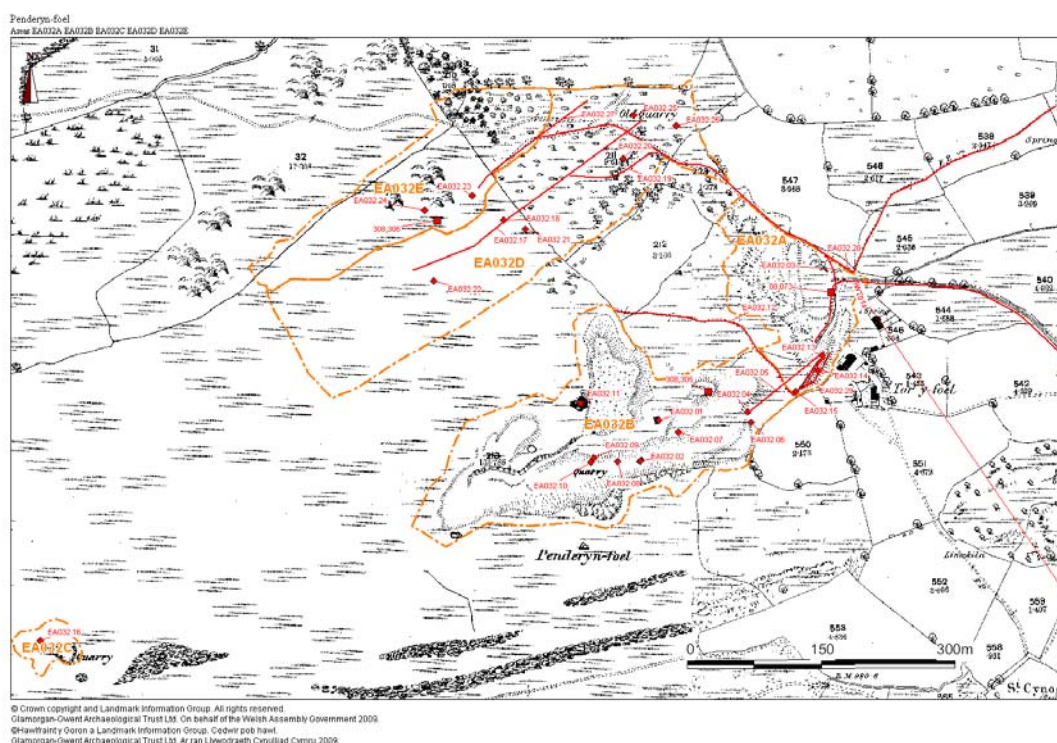


Fig 1 Penderyn Foel Quarries: Extractive areas and features identified from field survey and mapping work

The results of Year Six of the project indicated that the survival of extraction features and areas were to be found within 13 extractive landscapes, most significant of which were the quarries at Penderyn foel, the workings and other features on Hirwaun Common, West, Twyn Canwyllyr, the level and related features at Craig Nantmelyn, the engine house and related features at Bryn Defaid and Llwydcoed (EA001C), the quarries and incline at Blaengwawr Quarry, and the early workings and platform hut at Pantglas within the British Ironworks Extractive Area.

Other significant remains were noted at Blaennant (Ffynnon Lassa); Hirwaun Common East, Mynydd Cefn-y-Gyngon; and the Gadlys Extractive Area (EA010A and EA010C). The project also identified and examined two important water management systems; the feeders of the Hirwaun Ironworks (18th century) and the Llwydcoed Ironworks (c1800), the routes of which are extensively followed by public footpaths.

The report made recommendations varying from further detailed archaeological record/topographic survey to conservation/management and recommendations relating to the possibilities of public presentation and potential candidates for community projects were made.

GGAT 89 Prehistoric and Roman Settlements and other sites

This was the second year of a two-year project. The first year covered the western and northern unitary authorities, which have a high proportion of upland. The second year's work covered the unitary authorities of Cardiff, Monmouth, Newport, and the Vale of Glamorgan, a mainly lowland area. As we suspected they yielded a comparatively low proportion of surviving stone structures and were less well preserved. Another contrast was the very high proportion of sites where the primary evidence was from air photographs.

The dataset compiled last year for the assessment of the second phase of this project contained 149 sites in these four Unitary Authority areas.

All Historic Environment Record (HER) information was checked and corrected if necessary, and duplicates were eliminated as far as was possible from existing information. At this stage, 43 sites were eliminated from further investigation, leaving a total of 106. Of these, 83 required an air photograph search, a much higher proportion than the previous year. In all, a total of approximately 1570 individual aerial photographs were consulted. Some of these sites were then eliminated after examination of the air photographs showed that they were natural landforms, or where the most up-to-date photography showed that they had been built over. This left 97 sites where a visit was considered desirable. In a minority of sites, it was not possible to determine who the owner was, and it lay out of sight of rights of way. All the other sites were visited, but in many cases it was not possible to locate any traces on the ground.

The results were much less coherent than in the previous year. Settlements, non-defensive enclosures, fields and related sites again formed a significant part of the total. Apart from a handful of sites on the Monmouthshire part of the Black Mountains, these were lowland, and mainly from aerial photography. Unfortunately most were incoherent, and not conforming to any identifiable types. They cannot even be reliably identified as prehistoric or Roman. In some cases, the field visit showed that there were still significant upstanding earthworks, but without further fieldwork in the shape of geophysical survey and excavation, there is little prospect of advancing information. From work carried out in the Vale of Glamorgan as part of Southeast Wales Romano-British Sites Survey (GGAT 63), it is clear that Roman rural sites are likely to manifest themselves on the ground as a handful of pottery sherds, and that pottery does not appear to stray far from settlement sites. For this reason, fifteen sites known from casual finds of Roman pottery were subjected to scrutiny both through air photography and on the ground. However, no further evidence for any sort of activity was found: again, geophysical survey and excavation would seem to offer the best prospect of discovering more about them. The early Roman (1st century) site at Wonastow, which originally presented as a scatter of pottery, has proved after excavation to be a fort, and other sites may have equal potential. However, none of the other sites proposed as Roman military can as yet be proven; and further examination of two suggested practice works at Ifton Manor showed that they lacked the characteristic shape, and regular, protected entrances of Roman camps.

A large number of Roman bloomery and other ironworking sites had been entered on the HER from fieldwalking finds, with no further details. A particular concentration of these has been identified around Monmouth, probably due to the active archaeological groups in the area. Since iron slag is a common component of Roman-period settlement site assemblages, we were interested to discover whether any of these were dedicated smelting sites. However, desk-top work and field visits failed to reveal any further information about them. Excavation would appear to be the only way forward.

GGAT 96 Oystermouth Castle

A three-week community excavation was carried out at Oystermouth Castle in association with the Friends of Oystermouth Castle, Swansea City Council and Swansea University. This was coupled with a topographic survey of the surrounding area, arranged out as a training exercise for school students on work placement. The present project follows a geophysical survey commissioned by the Friends in 2006 (Davies 2006), which looked at the potential of the castle and its grounds for preserving archaeological information.



PI 8 Oystermouth Castle: General View of Excavations

Trench 2, to the south of Trench 1, proved to lie entirely outside the ditch. Here the Victorian rubble overlay as thin humic layer that in turn overlay the bedrock. The bedrock sloped downwards to the west. At the westernmost end of the trench, the limestone bedrock had been reddened, apparently by burning. Trench 3, further south again, lay outside the area covered by the Victorian rubble, and was entirely covered by the humic soil. There were two shallow, narrow stone banks running north-south across the full width of the trench under this soil. The limestone bedrock was again close to the surface, particularly in the centre of the trench; at the western end of the trench the bedrock had been cut away to form a rectilinear pit, the sides of which were coated with a thin smear of lime mortar. This pit was presumably related to the production of lime mortar or limewash.

After analysis of the results of the geophysical survey, it was decided that there were three areas in particular where excavation would be particularly useful:

- The area to the south of the eastern tower wall of the gatehouse (the Knoll). Excavation could help to resolve the question of the construction status of the tower, and ascertain whether the ditch that appears to be shown in the geophysical survey can be located. Further south on the knoll, a possible wall, and possible area of structural debris were located. The Knoll has also produced a parchmark, and there is a section of possible wall further south.
- The earthworks to the north of the castle, presumed by RCAHMW to be the defences of the outer bailey, but as a possible quarry by Davies. Excavation would determine which of these is correct.
- The Castle Tump ridge. This has also produced possible areas of archaeological origin on its northern and southern summits.

However, because the castle surroundings are a public place, the council required that all excavation over 0.15m (6") in depth should be enclosed within security fences. For this reason it was decided that excavation should concentrate on a single area, to minimise cost and disruption. The easiest area to fence was the Knoll, where existing boundaries could be utilised, and where there was the most certain prospect of positive archaeological results and therefore of public engagement. Accordingly, three trenches, one (Trench 1) measuring 4m by 20m and the other two measuring 4m x 10m, were opened in the area of the Knoll.

Trench 1 ran from the projected outside wall of the west tower, across the ditch and onto the knoll. Although it was initially believed that the towers would be curvilinear throughout, the results of the excavation indicate that the tower wall is represented by a rectilinear structure that ran east-west across the full width of the trench. Neither of the returns lay within the area of the trench, but what is believed to be the western return was identified as a slight earthwork platform. The corresponding wall to the eastern tower is visible as a short length of upstanding stonework immediately to the east of the modern access path to the gateway. The preliminary conclusion is therefore that the base of the towers had rectilinear buttresses as in Marten's Tower at Chepstow Castle.

The area of the ditch was sampled in two sondages, one at the southern end of the trench and the other approximately 5m further north. In both, the Victorian rubble which had been observed over almost the full extent of the ditch was found to overlie a silty clay cultivation layer, which in turn overlay a fine silt deposit, assumed to be ditch fill. Both sondages were taken down to a depth of 1.2m, the maximum permitted for Health and Safety reasons, without encountering any changes. We therefore conclude that the underlying profile of the ditch cut is wider and deeper than indicated by the geophysical survey. We hope in subsequent years to open a sufficiently large area so that the full profile of the ditch can be explored, by stepping the sides of the trench.

The finds were mainly Victorian, associated with the rubble in Trenches 1 and 2. However, there was a small quantity of medieval pottery in all three trenches. Preliminary assessment indicates an early 13th-mid 14th century date, and that imported wares are present. Trench 3 also produced a number of pieces of what may be medieval metalwork, although these await specialist confirmation. Finds and site records were correlated and digitised by students and other volunteers under the instruction and supervision of Trust staff. A grey literature report was produced. This contained an interim structural report, lists of records and finds, and an analysis of the feedback from both volunteers and visitors to the excavation.

Reference Davies, W, 2006 *A report on geophysical surveys at Oystermouth Castle, Swansea*, Gower (unpublished report for the Friends of Oystermouth Castle)

GGAT 97 Glastir Polygon Digitisation

Digitised polygons of selected Historic Environment Record PRN sites were created from available Historic Environment Record resources to support Historic Environment management within the Glastir agri-environment scheme.

The assessment was undertaken in two stages, the first stage involved the assessment of 1048 sites for digitisation into GIS polygons for the following classes:

- Prehistoric funerary and ritual sites
- Cross-ridge dykes
- Burnt mounds
- Interrupted ditch enclosures
- Prehistoric defended enclosures

The second stage of the project involved the assessment of 6,338 sites for digitisation into GIS polygons.

The total number of Glastir Management areas produced for the whole of the scheme was 2,354.

GGAT 98 Historic Environment Monitoring Project

The project involved the preparation of baseline Historic Environment Record (HER) data for a statistically selected dataset provided by Cadw for the purposes of *Monitoring the Historic Environment*.

The work programme involved the digital compilation of information for selected site records in the HER. A total of 413 sites were assessed as part of the project (338 plus reserves) resulting in a total of 296 PRN dossiers.

GGAT 99 Pontypool Urban Survey

A contingency project was initiated during the final quarter of 2009—10 to undertake preliminary mapping and database work for the Cadw Urban Survey of Pontypool (and included its satellite settlements of Pontnewynydd, Tranch, Pontymoel, as well as the medieval parish centre of Trevethin). The general aim of this project was to provide an informed historic environment framework for sustainable development within the wider context of regeneration using a methodological approach previously developed and subsequently refined for urban characterisation.

The primary output of the project was in the form of a GIS, which included a series of MapInfo tables and an electronic MS access database, and a supplementary report, providing provisional results, analysis and interpretation. The project work comprised three elements:

- The identification of archaeological historical interests: data gathering and mapping, which involved the collation and mapping of existing archaeological information (from national and regional historic environment records and other sources).
- The mapping of archaeological and historical development: this involved the mapping of street plans and housing block/plots, and other features, and used historical maps to identify and map phases of urban development. This historical topography was mapped in GIS (MapInfo) along with the key phases of historical development identified from map analysis (based on the 1st and 2nd edition OS, and Tithe plans. Major transport routes, i.e. roads, railways, tramroads, canals, and industrial sites within the study area were also mapped. Surviving designated sites (SAMs and Listed Buildings) were also added as a map layer.
- The production of an activity report: this brief report summarised the data sets and mapping, and outlined the broad chronology of development, identifying significant plan components. The report provided a summary of the phases of 19th century urban development, identified significant features of the pre-industrial urban landscape, and those of the industrial urban landscape, and summarised the major influences behind urban development, i.e. key transport networks and industrial sites.

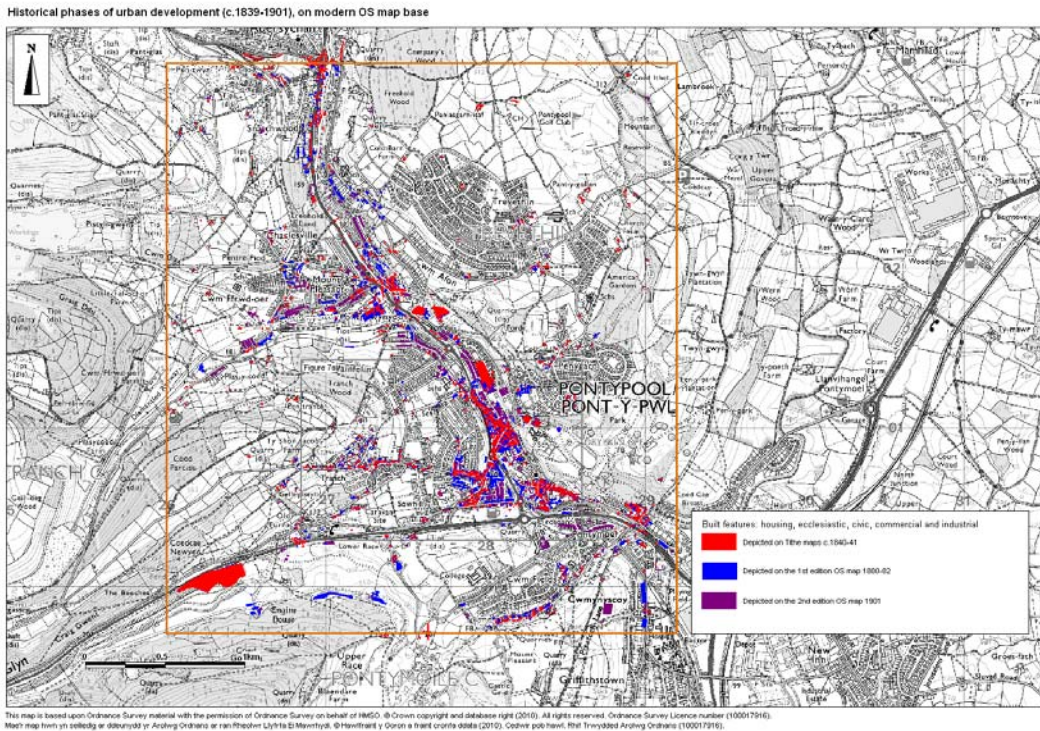


Fig 2 Pontypool Urban Characterisation: Development phases drawn out from map regression study

The mapping work undertaken during the course of the project highlighted the various stages in the development of the town of Pontypool and its satellite settlements, and has allowed the production of a phased map, which visually demonstrates the phases of settlement. This facilitated a preliminary analysis of settlement morphology and patterns of development, and formed the first step in a more detailed analysis of the historic urban fabric of Pontypool to be carried out by Cadw. The digital mapping work, comprising some 2,920 polygons, polyline and point features (and multiples thereof by type to allow analysis), along with the database consisting of 239 records compiled from known archaeological interests has highlighted several likely areas of historical interest based on the earliest areas of settlement depicted on cartographic sources, and the areas with the greatest likelihood of survival of the historic urban core.

The combination of record collation, digital mapping of heritage interests, and the production of digital phase maps of historic development, is ultimately intended to aid and inform future plans for conservation and regeneration, leading to sustainable development through fostering a greater awareness of the archaeological and historic environment resource and its potential.

The project was brought to completion during May 2010, with the finalisation of the digital mapping of the Tithe map, completion of analysis and the production of the preliminary mapping report.

REVIEW OF CADW PROJECTS APRIL 2010 — SEPTEMBER 2010

GGAT 80 SE Wales Industrial Ironworks Landscapes (Year Seven)

Over the previous six years the project examined the core ironworks areas, their associated transport systems, related water systems, and related extractive landscapes along the northern rim of the South Wales Coalfield. The Heads of the Valleys Initiative area contains important remains related to the iron industry. To make information available to the developing Heads of the Valleys initiative, the study of the ironworks extractive and water management systems focused on the area covered by the initiative. Within this three areas were considered to be worthy of more detailed study: the Aberdare-Hirwaun corridor and the area to the north of Hirwaun centred on the upper reaches of the Afon Cynon to Penderyn; an area immediately to the west of Abersychan taking in the Abersychan and Varteg Ironworks and the adjacent hillslopes and valleys; the upper Sirhowy, Ebbw Fach and Ebbw valleys and the watershed to the north of the Sirhowy Valley around Trefil, this encompassed a series of closely spaced Ironworks from Nantyglo to Sirhowy and their connected landscapes. These studies were all completed by the end of the 2009—2010 financial year.

The current year's project has allowed wider dissemination of the project's results, which had previously been made available to Historic Environment managers, planning authorities, and regional strategy deliverers. The three main elements of the dissemination included:

- A) The mounting of the technical reports on the Trust website
- B) The preparation and publication of a short academic article that outlined the methodology and principal results of the project
- C) The preparation and delivery of project specific popular material and public connection at the 2010 National Eisteddfod.

A) Mounting technical reports on Trust Website

Portable documents were made of the series of technical reports produced on the core ironworks areas, the tramroad system, the water supply system, extractive sites, and detailed study areas. These project reports have been posted in sections as pdf files on additional pages, each with a short summary of the project concept linked to the Industrial Archaeology page (<http://www.ggat.org.uk/cadw/swi/english/index.html>).

B) Academic Article

The investigation and recording of landscapes is a developing area of practice and academic study. The methods and approach adopted for the project along with the principal results including how the study has supported improved understanding of the surviving extent and condition of the Southeast Wales Ironworks Landscapes have been reported in a short academic article, which has been submitted for publication in the Proceedings of the Footprints of Industry Conference (*British Archaeology Reports* series with support from the Society for Post-medieval Archaeology). It is planned to launch the volume at the next European Archaeological Association Conference in the Hague.

C) Public presentation

The project and its results were presented to the general public at the 2010 National Eisteddfod held at Ebbw Vale. Bi-lingual display material and hand-outs were produced introducing the public to the project and informing how and where the results could be accessed; this material was displayed and made available with the project's leader in attendance at the event.

The General feedback from the event has been encouraging to date, with most interest coming from those who formerly worked at the Ebbw Vale Steelworks site, as well as people from the industrialised Heads of the Valleys area (from Hirwaun/Aberdare to

Blaenavon) and from other former industrial areas of Wales, e.g. the slate quarrying areas of Snowdonia.

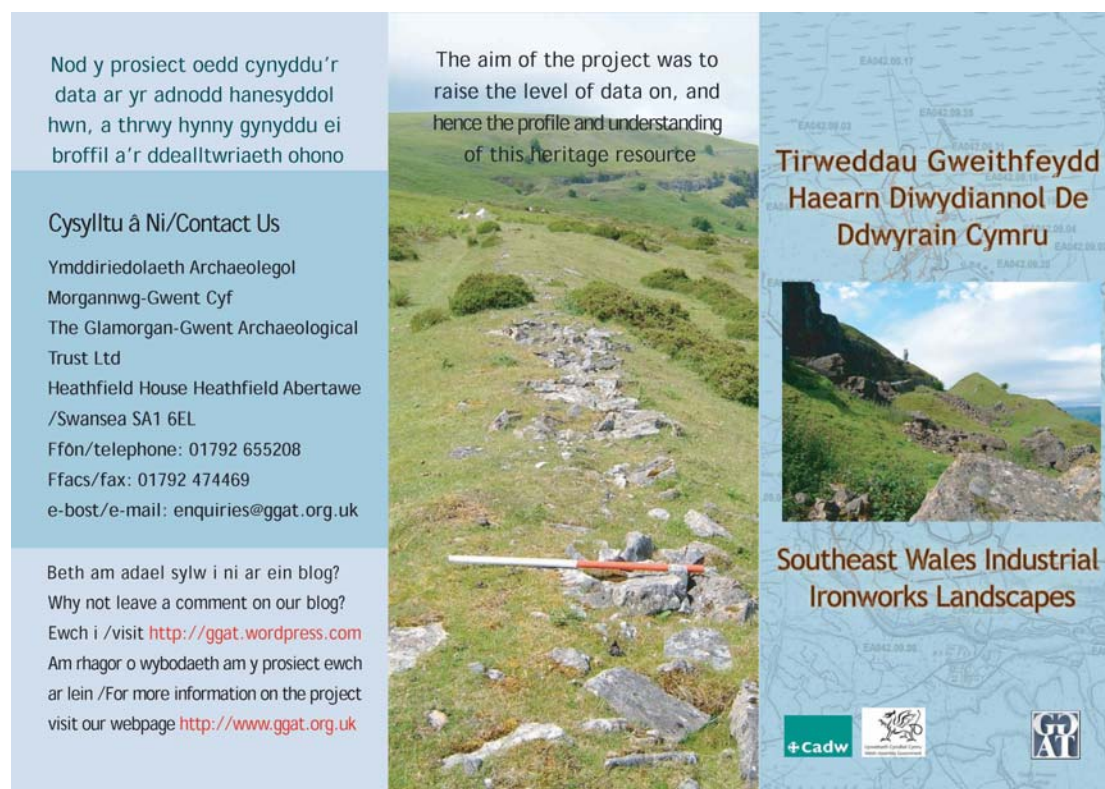


Fig 3 Ironworks Leaflet: produced to accompany display panels and detailing how to access the project reports.

GGAT 96 Oystermouth Castle

The second season of excavation at Oystermouth continued the previous work in and outside the western gate tower, and also explored the earthworks to the north of the castle.

Trench 1 was reopened and enlarged (to 8x20m), with the aim of seeing more of the tower's external wall and the ditch. The Victorian rubble, examined in some detail in 2009, was removed by machine. The results of the previous year's excavations had suggested that the 4m stretch of the south wall was part of a rectilinear base that would have reinforced the lower part of the tower, with the angle buttresses running up into the upper, round section of the outer wall in the manner of Marten's Tower in Chepstow Castle. Extending the trench to the west showed that, rather than meeting the west wall at a right angle, the south wall actually curved round to form the western face of the tower. It originally looked as though there might be a massive rock-cut ditch with a sandy fill, but further excavation, including a machine-dug pit and augering, suggested that the sand is probably glacial in origin. A live electricity cable prevented the northern edge of this deposit from being traced: where excavation could be resumed, the deposits against the outer face of the south wall of the tower were of silty clay, presumably ditch fill since the wall was fairly neatly faced all the way down within the sondage dug against it. It was not possible for reasons of health and safety to go down far enough to find the base of the ditch, or to trace the southern edge under the electricity cable.

On the opposite side of the castle from the entrance, two trenches were cut to examine the earthworks that RCAHMW (2000, 271) had suggested were connected with the castle bailey, and Davies (2006, 2) interpreted as post-medieval quarrying. Trench 4 (2x2m) was taken down to bedrock but produced no evidence of structures, and little evidence for medieval activity of any kind in this area. Although Trench 5 (2x5m), was not excavated all the way down to bedrock, the same absence of medieval utilisation was also apparent here. We therefore conclude that that Davies's interpretation is probably the correct one.

We continued to have a very positive response from the public, both volunteers and visitors to the excavation.



PI 9 Oystermouth Castle Completed Community Excavation

References

Davies, W, 2006, *A report on geophysical surveys at Oystermouth Castle, Swansea, Gower* (unpublished report prepared for the Friends of Oystermouth Castle)

RCAHMW, 2000, *An inventory of the ancient monuments in Glamorgan. Vol II1 part 1b: Medieval secular monuments: The later castles from 1217 to the present.*

GGAT 101 Swansea Bay Trackways

The objectives of this project are to produce a report on the excavation, recording and analysis of the two newly (winter 2009—10) discovered trackways and to provide a synthesis from all the available data on prehistoric structures found in the Swansea Bay area as part of a coherent study, placing these structures and features, their context, into local, regional and national narratives. This will take the form of a publication in a suitable journal or monograph along with information boards positioned along the sea front.

Work in the first half of the year has seen the completion of the draft excavation report excepting the timber analysis for Trackway's 1 and 2. For these sites testing of the wood samples indicates that dendrochronological analysis will not be feasible and radiocarbon (C-14) dating will be pursued instead. Work has commenced on synthesising the palaeoenvironmental data and other related information into the collated report and on producing accompanying illustrations.

GGAT 102 Southeast Wales Later Medieval and Early Post-medieval Monuments (c AD1100-AD1750)

A scoping project has been undertaken to identify potential future grant-aid projects on medieval and post-medieval sites held on the regional Historic Environment Record (HER), and held within available published lists. The scoping project arose from one of the strategic work areas identified in the 2009—14 Cadw Grant-aid Statement to the Welsh Archaeological Trusts. The project reflects needs and objectives identified by the Research Framework for Southeast Wales and the Welsh Historic Environment Strategic Statement: Detailed Action Plan, which identified as a discrete objective the establishment of a programme for the identification and the provision of protection for further medieval and later monument types of national importance by the end of 2010.

The project tasking has been set to include:

- HER search and initial database compilation
- Historic asset class examination
- Methodology review

To date the scoping project tasks have been progressed with a report on the first two elements (i.e. HER search and initial database compilation; and Historic asset class examination) produced to draft stage and submitted to Cadw for further comment. The final task that of methodology review is in hand and will be undertaken in liaison with Cadw and the representatives of the other Trusts (e.g Gwynedd Archaeological Trust are to distribute scheduling criteria used for their ruinous chapels and medieval mills of Anglesey projects, while Cadw are to establish criteria for wells and mill sites).

Following initial HER search, data extraction and compilation, to enable asset class examination, rapid filtering and sorting of the data was carried out to set criteria established by Cadw:

- a) That the site type is currently under represented in the schedule of ancient monuments. Some classes such as castles and moated sites have already been reviewed.
- b) That the site types are primarily archaeological sites, i.e. consisting of earthworks, ruinous structures and buried remains rather than buildings or structures in use. Buildings and gardens have both been the subject of extensive and systematic review.
- c) That have published lists, or are comprehensively represented on an individual Trust's HER. It is not envisaged that sites will be identified primarily from fieldwork, in contrast to previous scheduling assessment projects.
- d) That include components or elements that are capable of being identified, assessed and reported on within one financial year.

- e) For which scheduling criteria can be agreed with Cadw in advance of the main project.

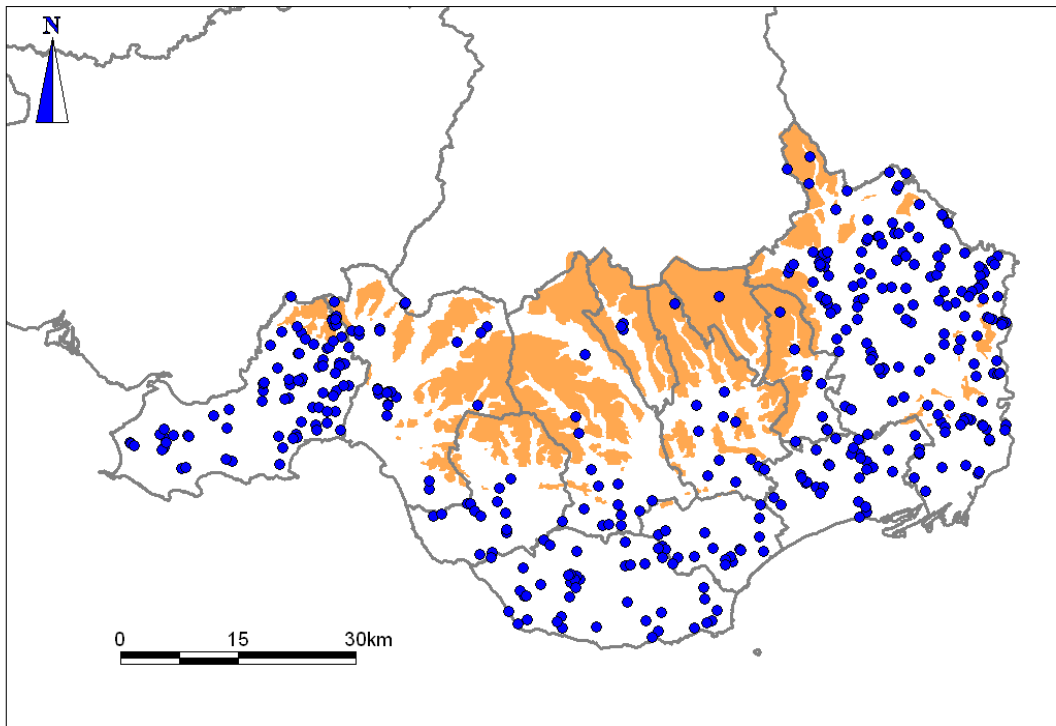


Fig 4 Southeast Wales Medieval/Post-Medieval mill sites on the Historic Environment Record

Medieval and Post-medieval Sites were extracted from GGAT HER database, and checked to establish as far as possible that they belonged to the prescribed period (i.e. post-1066 and pre-1750), and to remove site types which did not fit the criteria. This data was then reorganised to reflect the general thematic approach identified by Cadw:

- Medieval and post-medieval ecclesiastical sites
- Medieval and post-medieval industrial sites
- Medieval and post-medieval agriculture and subsistence
- Medieval and post-medieval transport
- Medieval and post-medieval towns and villages
- Medieval and post-medieval military sites

The data was then further sorted and filtered; first to identify potential sub-sets of the thematic groupings (e.g. churches and chapels, mills and water power, field systems, granges) and then filtered by form against type to attempt to obtain an indication of the numbers of sites primarily recorded as archaeological sites, as opposed to buildings. This data was filtered to distinguish between the numbers of protected (i.e. scheduled, listed, or both) and unprotected sites. Potential projects were then identified from those sites/groups of sites having high incidence of non-protection of sites that satisfied the criteria, this process also included comparison with other available published data sets.

In addition to the HER data, information from published material (including published lists) and previous heritage audit projects was also considered, whilst information on recent academic research was also sourced.

Within the identified thematic areas 45—52 potential projects have been identified. The basic outlines of projects including approximate number of sites requiring desktop appraisal and likely number of field visits have been set out.

GGAT 103 Morgannwg-Gwent Arfodir (Coastal Archaeology and Engagement)

The project parallels, and is based upon the Arfordir project run by Dyfed Archaeological Trust, and on the award winning SCAPE (SHOREWATCH) project in Scotland. The project will use data held in the Historic Environment Record alongside more detailed data as for example generated by the coastal surveys undertaken by the Trust during the 1990s (Locock 1996; Nayling 1998). In the first year the study has been limited to the Gower coast and Swansea Bay.

The primary aim of the project is to monitor the condition and the impact of erosion on archaeological sites on the Gower and Swansea Bay coasts and to develop community support and participation to sustain monitoring in the long-term. In delivering this the Trust also intends to enable members of the local community, community groups, history groups and local university students to learn more about the coastal archaeology in the area and to allow them, and provide them with the tools to take an active role monitoring and recording sites threatened by erosion, and to identify new sites. They will be provided with the training and skills they will need by archaeologists, and will be supported, and in some cases supervised by, project staff. The data gathered in the course of the project will be used to enhance the regional Historic Environment Record.

Work in the first half of the year has been concentrated on the following project preparation tasks: assessing the scope of the project including preparing project area known sites database and where necessary digitising heritage asset data for use on GIS platform; meetings; preparing information packs for groups/individuals; designing specific project website (to be hosted on the Trust website); preparing presentations and display material; assembling groups' recording packs/tools.

GGAT 104 Vale of Glamorgan Fieldwalking

In the first half of the year preparation work has been carried out to facilitate a community orientated field-walking exercise around prehistoric sites near Monk-nash, Vale of Glamorgan, which will take place at the end of September 2010.

There will be a number of activities running, including fieldwalking, finds washing and cataloguing. The community project will be open to all and volunteers are welcome to take part in as many activities as they wish. An introductory leaflet has been produced (<http://www.ggat.org.uk/news/ARCHIVE/fieldwalking/Leaflet%20art.pdf>).

FUTURE PROGRAMME OCTOBER 2010 — MARCH 2011

GGAT 1 Regional Heritage Management Services

The Heritage Management Section of the Trust will continue its regional remit to provide wide-ranging and detailed archaeological heritage management and outreach services, based on Cadw's list of Curatorial Services. This will include the provision of HER information and advice to enquirers and initiatives to increase our outreach to the general public. Detailed statistical information will continue to be provided to Cadw in our regular monitoring reports.

In the forthcoming half year specifically, the Heritage Section will:

- Continue assisting Cadw with information and advice on WWII archaeology
- Update Cadw's portion of the Trust website.
- Provide further assistance with the development of Glastir if required.

GGAT 100 Regional Outreach Service

The balance of work undertaken for this project is weighted towards the first half of the year, since the majority of events we attend take place in the summer, such as the Festival of British Archaeology, agricultural shows and (this year) the National Eisteddfod. During the second half of the year we will:

- Complete the remaining 4 panels for the travelling exhibition (the 5 already printed were used at events throughout the summer)
- Continue to update the Trust's website
- Produce new web pages on the Romans in South East Wales, based on the results of Cadw-funded projects GGAT 63, GGAT 75, GGAT 79, GGAT 89 and GGAT 93.
- Continue to provide initial response advice to enquiries about possible Community Archaeology projects.

GGAT 101 Swansea Bay Trackways

The following tasks will be carried out in the second half of the year: completion of dating work and synthesis of palaeoenvironmental data and related timber structures into illustrated publication report; production and deposition of archive; production of display boards.

GGAT 103 Morgannwg-Gwent Arfodir (Coastal Archaeology and Engagement)

The following tasks will be carried out in the second half of the year: meetings in the Swansea Bay/Gower area to raise awareness of the project; training days with groups and guided walks; fieldwork; monitoring, fieldwalking, survey, excavation, both with groups and without; verifying data returned by volunteers; entering data generated by fieldwork into HER; summary activity report.

GGAT 104 Vale of Glamorgan Fieldwalking

Following the completion of the community orientated fieldwalking exercise around prehistoric sites near Monkash, Vale of Glamorgan in late September 2010, results will be collated and a short report produced.

Proposed Contingency Projects

GGAT 96 Oystermouthcastle (Post-excavation)

Following the completed quantification and assessment exercise a proposal will be made to undertake the post-excavation study of the data recovered through the community excavations undertaken in 2009 and 2010 leading to the publication of the results and the production and deposition of an ordered archive.

GGAT XX Southeast Wales LMEPM (c AD1100-AD1750) Medieval/Early Post-Medieval Ecclesiastic Sculpture

On the basis of the work carried out between April and September 2010 a contingency project will be proposed on medieval and post-medieval churchyard sculpture for the second half of the year. This will examine known sites on the HER within Glamorgan, assessing condition, rarity and significance, field visits will provide validation and inform recommendations.

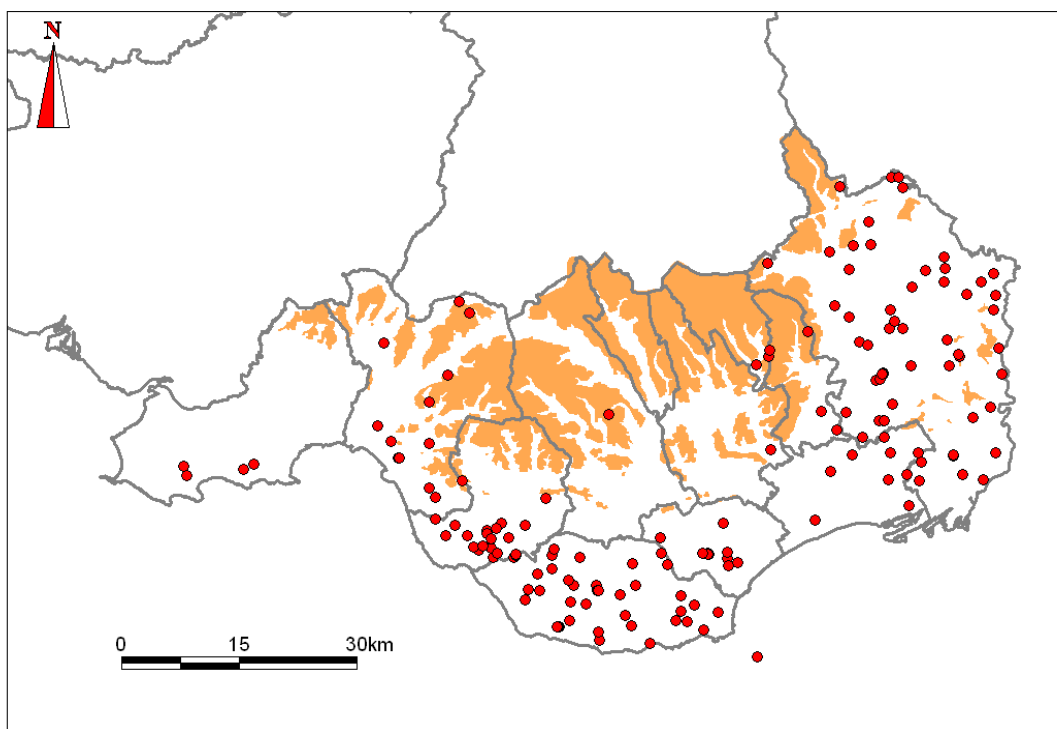


Fig 5 Southeast Wales Medieval/Post-Medieval Ecclesiastic Sculpture on the Historic Environment Record

CADW-FUNDED SCIENTIFIC CONTRACTS

In 2009—2010 advice in respect of palaeoenvironmental sampling was sought in respect of emergency recording and sampling work in Swansea Bay (GGAT 1), and at Oystermouth Castle (GGAT 96).

POST-EXCAVATION AND PUBLICATION REVIEW

'Grey literature' reports on grant-aided work

The database of all 'grey' literature reports produced for Cadw: Welsh Historic Monuments has been maintained and a copy supplied to the Inspectorate. In the past year the following reports have been produced:-

Excavation and survey at Oystermouth castle: Interim report of the 2009 season GGAT Report No 2009/085

Later Prehistoric Undefended Settlement and Roman Rural Settlement in Southeast Wales GGAT Report 2010/019

Southeast Wales Industrial Ironworks Landscapes Year 6: The Aberdare – Hirwaun – Penderyn Corridor and Eastern Valley GGAT Report No 2010/026

Survey and trial excavation at Church Hill, Penmaen, Swansea GGAT Report No 2010/033

Pontypool Urban Survey, Torfaen Preliminary mapping report GGAT Report No 2010/034

APPENDIX 1 — REVIEW OF DELIVERY OF WAG OBJECTIVES

In our project proposals for 2009—2010 we set out how these would amongst other things address certain Welsh Assembly Government objectives and in doing so benefit the populace of Southeast Wales. Following completion of the works we now review the success of the projects in addressing these issues.

The programme has allowed skilled graduate professional Historic Environment staff to be retained in Southeast Wales. The work carried out by these staff generates other archaeological and related employment whether by the Trust or other organisations. Thus for example advice given by the archaeological planning management service (3 staff) requiring applicants to provide additional information on the archaeological resource has meant that archaeological contractors have been commissioned by the applicants. Likewise conditions attached to planning consents requiring archaeological work to be undertaken during the development also required archaeologists to be engaged. It is difficult to calculate how many full and part time jobs were created or sustained by the planning process, but it is estimated that excavations and other investigations carried out by archaeological organisations, both large and small, across the region resulted in the generation of the equivalent of 20-40 full time jobs. Graduates, sometimes with further degrees or additional professional qualifications, hold the majority of these jobs.

Recording impacts of some of our works is not and may never be easy, and there is an absence of any meaningful longitudinal study data. Indeed to assess effectively the impact of much of our work would require the use of separate mechanisms to those available within the ambit, discrete cost, and time limits of project funding.

Such would be the case for our Ironworks project which has clear and important outcomes that support the delivery of all kinds of national and local objectives but measuring these in a meaningful way would need an extensive period of carefully designed and properly funded survey. However, for this completed major study we can observe that that it has fed into many of the WAG objectives, with data issuing from the project made available to inform strategic decision-making. The project has allowed authoritative statements to be made on the distinctiveness of the Southeast Wales Region in terms of its industrial heritage and landscapes, informing the Spatial Plan. The project has been re-shaped to link specifically to the Heads of the Valleys Initiative Area; informing players of the results to date of the project, the importance of the sites, and more particularly the landscapes including the many minor elements often-overlooked, without which integrity is reduced, and, how early study and incorporation of data into strategic planning can avoid later conflict, formed a distinct element in the programme.

This project has also enabled authoritative data to be produced for use by all kinds of parties in delivering the Strategic Principles and Vision (particularly visions 1 and 2) and assisting the Strategy for Action (notably Developing a Sense of Place, Cultural Signposting, and more particularly the South Wales Industrial Heritage Experience, Interpreting the Cultural Landscape), as set out in The Cultural Tourism Strategy. As the project helps to raise awareness of the distinctiveness of particular communities also it ties in to the WAG's 'The Welsh Historic Environment Towards a Strategic Statement: people and communities' statement. The dissemination of the results of the project on the Trust's web-site, production of bi-lingual information panels and accompanying leaflets fulfils the WAG Objectives 'One Wales A Progressive Agenda for the Government of Wales' aims of promoting and preserving the rich and diverse culture and heritage of Wales. In terms of 'The Welsh Historic Environment Towards a Strategic Statement' the dissemination also helps give distinction to particular communities. The disseminated work is also commensurate with many of the WAG's specific Commitments, such as the Spatial Plan and the Cultural Tourism Strategy by developing, or indeed re-invigorating a sense of place.

At a smaller scale the work that we carried out to understand the Urban Character of Pontypool also feeds into many of the One Wales strategies, perhaps most significantly the Spatial Plan, the Pathways initiative and the Environment Strategy for Wales. Urban characterisation, in relation to the former, allowed authoritative statements to be made on

the distinctiveness of the area, and in relation to the latter provides a tool to assist the implementation of measures to maintain and enhance the quality and diversity of the historic landscape and manage impact so that unique character and cultural features, including building stock are preserved.

For some areas of work whilst connections with high-level strategies are apparent measurement of total impact is more difficult given the consultation advisory communication pathways. This is particularly true for our Heritage Management services project. Certainly, the partnerships developed with national government and local government have contributed to the protection and understanding of more local heritage and could be said to contribute to the development of a 'Strong and Confident Nation', and it could be said that it assists the 'Learning for Life' agenda by supplying information on the historic environment to communities and individual members of the public, and assisting them to develop projects to research the history and archaeology of their areas and by imparting knowledge through booklets, lectures, exhibitions and web-based applications. The partnerships that we have developed with government bodies at local and national level, third sector organisations and private sector bodies can also be seen to be assisting in the delivery of objectives for 'a prosperous society'. The Trust continued to provide heritage management information through the Tir Gofal scheme, and front-end data for its forthcoming replacement the Glastir scheme, both of which promote the conservation of the historic environment as part of supported agri-environment management. Similarly, the initial screening of Better Woodlands for Wales applications allows for the identification of those where heritage management information is required.

As well as providing opportunities to volunteers to experience archaeological exploration our community driven projects have provided a valuable introduction to archaeological fieldwork to students complementing their academic studies at university and providing them with new skills. By integrating professional staff, volunteers, students and academics through common interest cross-social strata bonding and synergies were enhanced. We have also supported post-graduate researchers and professional training and development initiatives.

For planning works measurement is clearer, thus in 2009—2010 there were 47 cases where additional information on the archaeological resource was required by the LPA, 369 planning consents issued with conditions requiring archaeological work to be undertaken during the development and 184 reports on archaeological work undertaken in the region were registered by the Historic Environment Record. Detailed advice on the impact of proposed development on the archaeological resource was given on 1362 applications. Whilst the overall caseload was down due to the effects of recession this was only fractionally so for planning condition consent preparation work and database assimilation. Our Archaeological Planning Management Service has been assisting all the Unitary Authorities in the Region with the development of their Local Development Plans ensuring that the historic environment is fully considered in the preparation of the LDPs and that an appropriate Strategic Environmental Assessment is carried out. The results of this work will not be fully recognised until the LDPs have been adopted.

In promoting a rich and diverse culture the Trust has started to contribute to raising awareness of the wealth of historic landscapes and archaeology in our area through the preparation of new exhibitions and these were delivered to 20 venues in our area. Copies of the exhibitions can be seen on the Trust website. The production of bi-lingual leaflets and mounting of other information on the Trust website fulfils the WAG Objectives 'One Wales A Progressive Agenda for the Government of Wales' through the dissemination of the projects results, which enhance to promote and preserve the rich and diverse culture and heritage of Wales. The projects disseminated are also commensurate with many of the WAG's specific commitments, such as the Spatial Plan and the Cultural Tourism Strategy by developing, or indeed re-invigorating a sense of place.

Strategic Statement for the Historic Environment for Wales

The publication of the Strategic Statement for the Historic Environment for Wales with supporting action plans linked to the delivery of cross-sector objectives for the betterment of Wales and its inhabitants has allowed us to focus particular achievement reporting against the the declared statement aims. These are summarised in the following table.

<i>Objectives</i>	<i>Targets (where specified)</i>	<i>GGAT Actions</i>
A modern clear accountable and simple system of heritage protection		<p>Consultation responses on draft guidance for local planning authorities and other key interests on Historic Environment Records.</p> <p>Consultation responses on draft Conservation Principles.</p> <p>Involvement in stakeholder consultation on Wales Planning Review</p>
<p>Identification, recording and designation of heritage assets</p> <p>(as lead body with Cadw and other WATs)</p>	<p>Establish a programme for the identification and the provision of protection for further medieval and later monument types of national importance by the end of 2010.</p>	<p>Completion of assessment of outstanding classes of pre-Roman monuments to facilitate completion of the scheduling designation for all known prehistoric and Roman monuments of national importance by the end of 2012.</p> <p>Continued support for the development of programmes of study to enable the designation of second world war sites.</p> <p>Agreed methodology and established programmes for implementation in 2010—2011 of studies to assist the identification and protection for further medieval and later monument types.</p>
<p>Effective management and provision of access to historic environment records</p> <p>(as supporting body)</p>	<p>Enhance the Historic Wales portal so that all electronic records relating to the historic environment are fully accessible to the public online.</p>	<p>Continued development of a common web-based management system for the Welsh (regional) Historic Environment Records – system tested, bug-fixed and rolled out across the Trust in 2009—2010 and in full use by the end of the year. System is web-browser interrogated and designed to be delivered across WEB 2 platforms. Work commenced in 2009—2010 on developing public user front end (<i>Archwilio</i>). Amongst other things this will include user feedback facilities and links into other historic environment records and cultural databases.</p> <p>The Trust has continued to work with Cadw/RCAHMW/NMGW to ensure compatibility of digital Historic Environment Records and access through a common portal.</p>
<p>People with skills and understanding to conserve and regenerate heritage assets</p>		<p>The Trust accessed support to provide and delivered workplace learning for both UK and European schemes.</p> <p>Opportunities for the third sector to volunteer at heritage sites have been developed (see Community Engagement and Participation below).</p> <p>The Trust is a partner to CBAs bid to HLFs Skills for the Future resource to improve skills in delivering Community Archaeology programmes across the UK through workplace learning.</p>

People with the skills and understanding to make decisions about the historic environment		<p>The Trust as an IfA Registered Organisation is in the process of refining and enhancing organisation wide training plans to support delivery of improved professional CPD requirements.</p> <p>The Trust has provided professional development training to others; eg CPD sessions to Unitary Authority Planning Staff.</p> <p>Support has been given to the development of a third sector led heritage network.</p>
Capturing Distinctiveness		Support as contracted/grant-aided has been given towards the delivery of the initial programme of urban characterisation studies in the six spatial plan areas.
Tackle Heritage at Risk (as supporting body)	Complete the establishment of a list of early medieval inscribed stones at risk and raise awareness through the establishment of a website by Summer 2010	<p>Supported the development of the Glastir scheme through provision of information and advice regarding the management of heritage features and, with assistance from Cadw, defining management areas to secure the protection of historic environment features on agricultural land through the Glastir scheme.</p> <p>Through the West Coast Palaeolandscapes project developing a management tool to provide information and advice to secure the protection of marine historic environment remains.</p> <p>Provided Historic Environment data to support establishment of programme to monitor un-scheduled monuments on agricultural land.</p> <p>The Trust contributed to establishing a list through representation on the National committee for the Recording and Protection of Early Medieval Inscribed Stones and Stone Sculpture.</p>
Sustainable development		The Trust has provided and are continuing to provide strategic historic environment input into Local Development Plans helping to identify sustainable policies and appropriate land allocations.
Public participation and volunteering		<p>The Trust has widened public participation and volunteering actions.</p> <p>The Trust has developed the participation of volunteers working on a regular basis on various projects to improve its Historic Environment Record.</p>
Public access to information and online services provision		The Trust has developed public access to on-line HERs (see above) and made other data available through expanding its website.
Community engagement and participation (as supporting body)	Promote opportunities for voluntary and community	Opportunities for the third sector to volunteer at heritage sites have been developed: the Trust undertook a programme of investigative works at Oystermouth Castle using students for University of Swansea and volunteers from the local community under professional supervision; and with support from HLF carried out two small-scale community driven desk-based/field survey investigation projects (with public presentation as part of the end product) in two

	participation in research and 'discovery', for example, via Heritage Open Doors programme.	particularly deprived Communities First Areas, this had positive results. Work including measuring GLOs and SLOs. (See also Public Participation and volunteering above)
Extending understanding of the Welsh historic environment (as supporting bodies)	Review and clarify priorities for the archaeological research framework by the end of 2010.	A wide range of investigations, both grant aided and commercially funded, have been undertaken. These have covered all aspects and periods of Wales' history and archaeology. The Trust has contributed to the on-going review of the Welsh Archaeological Research Framework lead by IfA Wales/Cymru.

APPENDIX 2 — PLANNING STATISTICS 2010—2011

LPA	Applications	Mapped	No of IPE	No Reply	DARi	DAR Disc	DAR Disc+	LB Disc	WB	ASS	EVA	Sec 23	Record	Objection	Other	No Response	Determined	LPA
BLG	410	75	14	6	0	2	6	0	0	0	0	0	1	0	1	0	0	BLG
BRI	1144	201	59	0	0	10	28	3	4	0	1	4	4	0	2	0	3	BRI
CAE	912	163	63	1	0	3	38	0	6	0	3	1	9	0	2	0	0	CAE
CAR	2259	255	117	9	0	16	47	6	7	1	0	15	6	1	9	0	1	CAR
MON	1095	463	350	0	4	40	134	16	60	3	8	38	19	3	20	0	5	MON
MTY	344	61	27	0	0	0	20	2	2	0	0	1	0	1	1	0	0	MTY
NEW	1231	218	201	4	3	12	71	1	27	0	9	33	0	0	38	0	3	NEW
NPT	924	141	67	3	0	5	26	3	3	1	2	10	2	2	5	0	5	NPT
RCT	1275	204	74	7	0	10	32	3	6	2	0	3	6	1	3	0	0	RCT
SWA	1758	269	114	0	0	18	42	2	19	0	2	24	3	0	2	0	2	SWA
TOR	542	70	41	0	0	4	26	0	1	0	1	1	5	0	3	0	0	TOR
VOG	1283	301	173	0	0	11	75	3	35	4	9	23	6	1	4	0	2	VOG
BBNP	415	65	27	0	0	9	11	0	1	0	1	2	2	0	0	0	1	BBNP
TOTAL	13592	2486	1327	30	7	140	556	39	171	11	36	155	63	9	90	0	22	TOTAL

BLG = Blaenau Gwent County Borough Council

BRI = Bridgend County Borough Council

CAE = Caerphilly County Borough Council

CAR = Cardiff County Council

MON = Monmouthshire County Council

MTY = Merthyr Tydfil County Borough Council

NEW = Newport City Council

NPT = Neath Port Talbot County Borough Council

RCT = Rhondda Cynon Taff County Borough Council

SWA = City and County of Swansea

TOR = Torfaen County Borough Council

VOG = Vale of Glamorgan Council

BBNP = Brecon Beacons National Park

Applications = Number of planning applications submitted to LPA

Mapped = Number of planning applications checked against SMR

No Reply = Number of applications requested by GGAT but not received

DARi = Number of applications received which had no archaeological impact

DAR Disc = Number of applications received where it was determined that there was unlikely to be an archaeological impact

DAR Disc + = Number of applications received where it was determined that there was minimal archaeological impact

LB Disc = Number of applications received which affected listed buildings but were perceived not to have an archaeological impact

WB = Number of applications received which were determined to require the imposition of a watching brief condition

ASS = Number of applications received which required further information in the form of a desk-top assessment prior to determination

EVA = Number of applications received which required further information in the form of an evaluation prior to determination

Sec 23 = Applications where the archaeological resource can be protected by the imposition of conditions requiring archaeological work

Record = Applications where it was determined that condition requiring the developer to record the standing structure should be imposed

Objection = Applications where the development would cause damage to the archaeological resource and GGAT object

Other = Number of applications received where GGAT's response could not be classified

No Response = Number of applications received which GGAT failed to respond during consultation period

Determined = Applications determined by LPA before being sent to GGAT